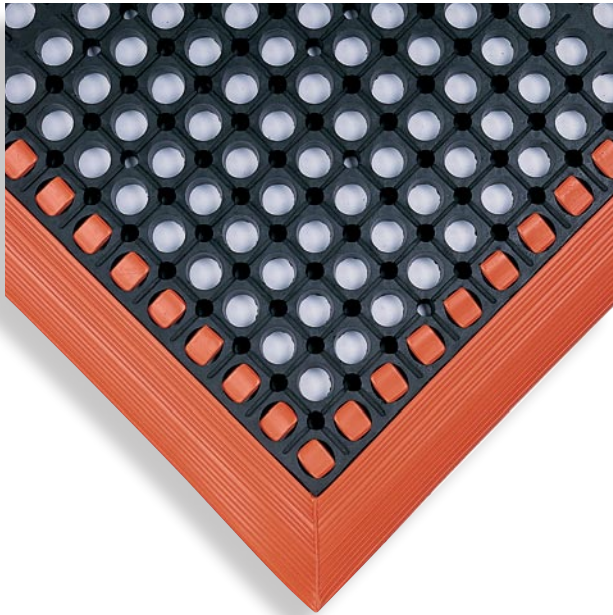


Industrial WorkSafe® No. 479

Performance: BEST



Industrial WorkSafe®'s extra-thick, **springy, natural rubber** compound is specifically designed to prevent fatigue...some say it's our most comfortable rubber mat. Slightly angled drainage holes and underside knobs allow water and debris to flow through and under the mat. Rugged beveled borders on all four sides provide safe access. A perfect design for individual workstations, **Industrial WorkSafe®** is a **high performance ergonomic mat for areas that are wet or scattered with debris or shavings.**

Specs

Uses Wet and dry areas

Compound 100% Natural rubber

Durometer 55 per ASTM D2240

Coefficient of Friction .83 Dry .14 Wet per ASTM F1677

Tabor Abrasion 1% lost @ 1,000 cycles per Fed Std. 193

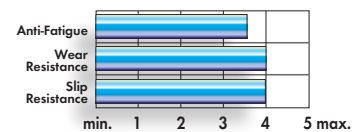
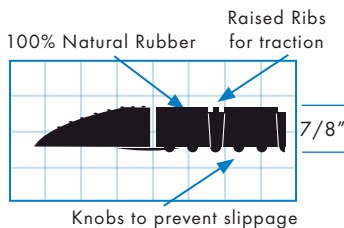
Flammability "A" Rating per MVSS 302

Edging Safety beveled on 4 sides

Thickness 7/8"

Warranty 1 year, conditional

Colors Black/Orange (BOR), Black/Yellow (BYL), Black/Black (BBK)*



Stock Sizes

Part Number	Size
479.78x28x40	28" x 40"
479.78x40x52	40" x 52"
479.78x40x64	40" x 64"
479.78x40x124	40" x 124" **

**A two-section mat interlocked with connectors.

Non-Stock Sizes

Part Number	Size
479.78Custom	To 12' wide by up to 60' long (30' maximum in one section).

Specify Color: Black/Orange (BOR), Black/Yellow (BYL), Black/Black (BBK)*, when ordering. *Only available on Custom mats.

C Custom widths and unique configurations are available. Some mats may require several sections. Please call for pricing.

