



YALE HAND CHAIN HOISTS



OVER 100 YEARS
OF INDUSTRIAL LIFTING EXPERIENCE

Over a century of innovations

The Yale® name has stood for quality for over 100 years. In fact Yale is one of the oldest hoist manufacturers in the world. Many trend-setting innovations have been developed over the years by Yale. A few include the first differential hoist in 1875, and four years later the Weston Screw Load Brake.

Today, Yale Load King hoists are designed for long dependable service and are up to 95% efficient. Load King hoists include the LH2 hook type, LPT2/LTG2 plain geared trolley type, and the LRP2/LRG2 close headroom plain geared trolley type.

Quality Engineered and performance tested, Yale products, like the company itself, are built to last.





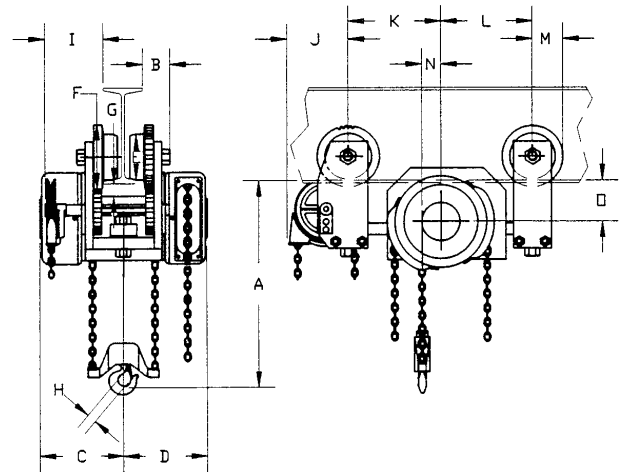
Yale Load King, LRP2 & LRG2 Close Headroom, Swivel Truck Trolley Hoists

Capacity range: 1/4 – 6 ton

The Yale Load King Swivel Truck close Headroom Trolley Hoist provides an absolute minimum distance from the bottom of the runway beam to the saddle of the load hook in the fully raised position.

Our Swivel Truck Close Headroom incorporates two compact physical dimensions, and the ability to travel extremely short radius curves. Runways can be located closer to walls than would otherwise be possible, with units of heavier and bulkier construction. The Swivel Truck is ideal for patented monorail, especially when required for use with switches, turntables and interlocks.

CUSTOMER MUST TAKE INTO CONSIDERATION FLANGE WIDTH AND THICKNESS. DIMENSIONS SHOWN ARE ACCURATE FOR ANY "S" OR "WF" BEAM. FLAT TREAD WHEELS (NOT SHOWN) SUPPLIED FOR "WF" BEAM APPLICATIONS



Clearance Dimensions (in.)

Capacity	Maximum Flange Width And Thickness for Straight Track	Maximum Flange Width And Thickness for Minimum Radius Track
1/4	5 3/8" WIDE X 1/2" THICK	3 3/8" WIDE X 1/2" THICK
1/2	5 3/8" WIDE X 1/2" THICK	3 3/8" WIDE X 1/2" THICK
1	5 3/8" WIDE X 1/2" THICK	3 3/8" WIDE X 1/2" THICK
1 1/2	6" WIDE X 5/8" THICK	4" WIDE X 1/2" THICK
2	6" WIDE X 5/8" THICK	4" WIDE X 1/2" THICK
3	6" WIDE X 5/8" THICK	5 1/8" WIDE X 5/8" THICK
4	6" WIDE X 5/8" THICK	5 1/8" WIDE X 5/8" THICK
5	8" WIDE X 7/8" THICK	7 1/8" WIDE X 7/8" THICK
6	8" WIDE X 7/8" THICK	7 1/8" WIDE X 7/8" THICK

Specifications

Catalog Number		Standard Lift	Capacity in Tons	Minimum Radius Curve	Minimum Beam Size*	Distance From Beam To Hook Saddle Headroom	Chain Pull To Lift Full Load Lbs.	Chain Overhaul To Lift Load One Foot	Net Weight, Lbs.	
LRP2 Plain	LRG2 Geared								Plain	Geared
923-01400	923-01500	8'	1/4	21"	S5" x 10.0#	6 3/16"	17	33 ft.	127	144
923-03400	923-03500	8'	1/2	21"	S5" x 10.0#	6 3/16"	35	33 ft.	127	144
923-05400	923-05500	8'	1	21"	S5" x 10.0#	6 3/16"	70	33 ft.	127	144
923-06400	923-06500	8'	1 1/2	30"	S6" x 12.5#	6 3/4"	57	66 ft.	245	267
923-07400	923-07500	8'	2	30"	S6" x 12.5#	6 3/4"	76	66 ft.	251	270
923-09400	923-09500	8'	3	42"	S8" x 18.4#	8 1/4"	42	170 ft.	345	375
923-11400	923-11500	8'	4	42"	S8" x 18.4#	9 1/4"	58	170 ft.	350	380
923-13400	923-13500	8'	5	48"	S10" x 25.4#	9 15/16"	73	170 ft.	466	496
923-14400	923-14500	8'	6	48"	S10" x 25.4#	9 15/16"	90	170 ft.	466	496

Beam size and curve radius must always be specified when ordering * Note: Min. beam for wheel clearance only. Customer must verify their beam is adequate for the applied loading.

Curve radius must always be specified when ordering. Each unit is set for a specified flange width and is not adjustable

Capacity in Tons	A	B	C	D	E	F	PLAIN G	GEARED G	H	I	J	K	L	M	N	O
1/4 THRU 1	6 3/16	2	6 9/16	6 9/16	3 3/4	5	7/8	7/8	3 1/32	4 1 1/16	3 3/4	7 1/4	6 1/2	2 1/2	1 3/8	2 15/16
1 1/2 AND 2	6 3/4	2 3/16	8 1 1/16	8 1 1/16	4 1/2	6	5/8	5/8	1 1/8	7 3/16	6 1/4	11 3/8	7 5/8	3	3	1 1/16
3	8 1/4	2 9/16	9 7/8	9 7/8	6 3/8	8	15/16	15/16	1 11/32	8 1/8	6 1/8	11 9/16	7 1 1/16	4	3	3 7/16
4	9 1/4	2 9/16	9 7/8	9 7/8	6 3/8	8	15/16	15/16	1 11/16	9 15/16	6 1/8	11 9/16	7 1 1/16	4	3	3 7/16
5	9 15/16	2 13/16	10 1/8	10 1/8	7 3/16	9	7/8	7/8	1 11/16	8 1/2	6 15/16	11 9/16	8 13/16	4 1/2	3	3 7/8
6	9 15/16	2 13/16	10 1/8	10 1/8	7 3/16	9	7/8	7/8	1 11/16	8 1/2	6 15/16	11 9/16	8 13/16	4 1/2	3	3 7/8

* Geared units only.

Hoists for wider flange widths than illustrated above may be possible. Consult factory.

Yale Load King LH2 Hook Mount Hand Hoists

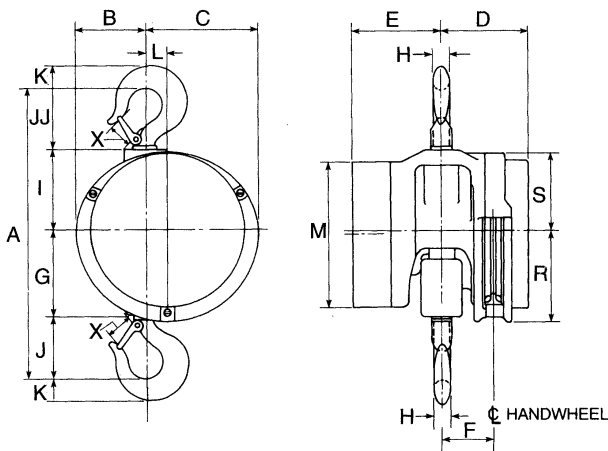
Capacity range: 1/4–4 ton

One of the most popular and reliable hoists ever designed, the Cyclone combines superior engineering, efficiency and durability. Available in a variety of capacities from 1/4 ton to 10 tons, Cyclone features:

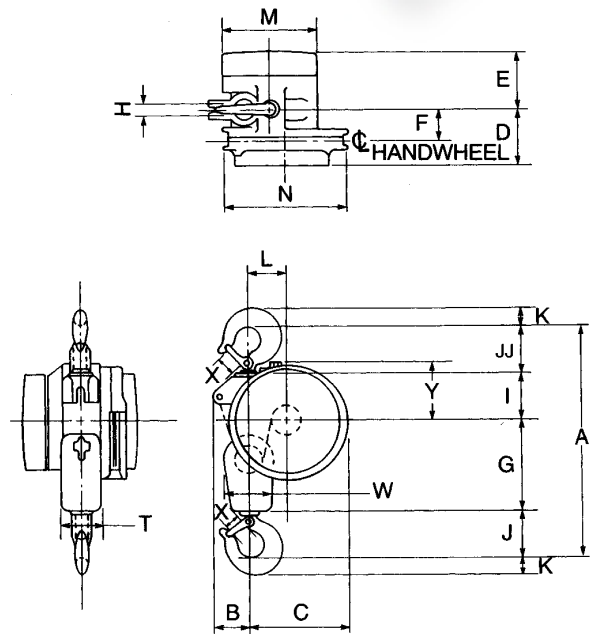
- Most interchangeability of parts in the industry
- Standard Load Limiter for simple, automatic overload protection
- Enclosed contoured Weston-type automatic brake for positive load control
- High-efficiency spur gearing for greater lift with minimum effort
- Rugged Hoistaloy chain for added strength and durability
- Fully machined, forged liftwheel pockets for easier lifting and smooth free chaining
- High-strength aluminum alloy castings in frame and covers
- Inspected over 75 times to meet or exceed HST/ASME/ANSI performance and safety standards
- Standard hand chain drop is 2 feet less than lift, (example: 8 foot lift hoist has 6 foot hand chain drop)
- Chain containers, zinc-plated load and hand chain aluminum unwelded hand chain, Latchlok hooks, bronze hooks, eye-type suspension, bullard hooks and units without Load Limiter optional, depending on capacity
- Lifetime warranty
- Metric rated
- Made in U.S.

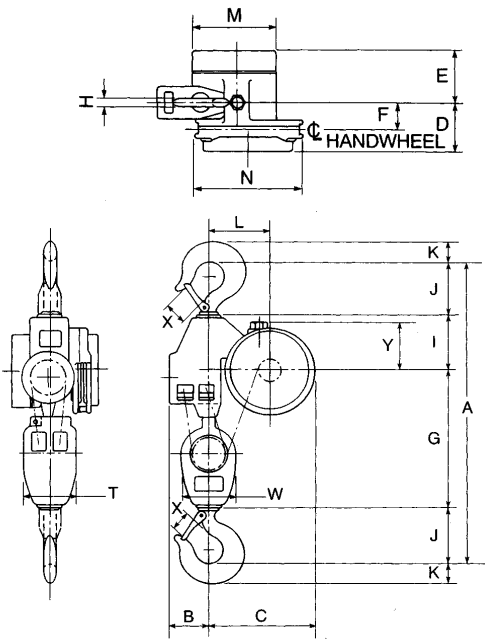


1/4 – 2 ton

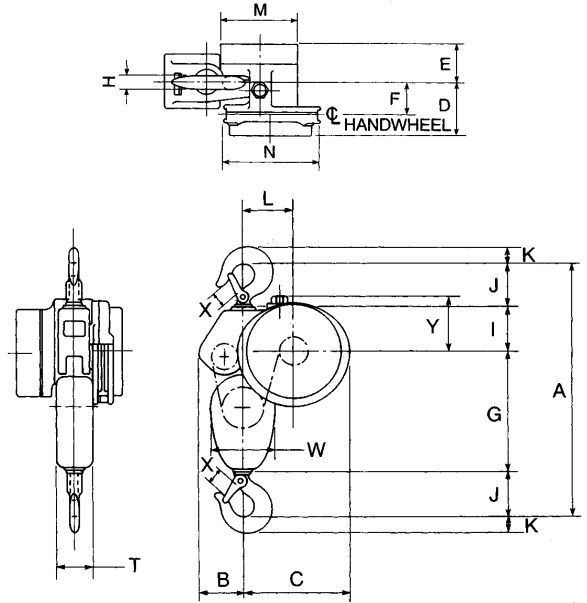


3 – 4 ton





8 - 10 ton



5 - 6 ton

Specifications

Rated Capacity* (Tons)	Product Code	Standard Lift† (ft.)	Reeving	Minimum Distance Between Hooks (in.)	Chain Overhauled to Lift Foot One Foot (ft.)	Chain Pull to Lift Full Load (lbs.)	Shipping Weight (lbs.)
1/4	924-02100	8	1	12 7/8	22 1/2	23	37
1/2	924-03100	8	1	12 7/8	22 1/2	46	37
1	924-05100	8	1	14	30	69	40
1 1/2	924-06100	8	1	17 5/16	40 1/2	80	65
2	924-07100	8	1	17 5/16	52	83	64
3	924-09100	8	2	21 1/2	81	85	96
4	924-11100	8	2	21 1/2	104	88	96
5	924-13100	8	3	24 1/4	156	75	128
6	924-14100	8	3	25 1/4	156	90	132
8	924-16100	8	4	34 1/2	208	89	235
10	924-17100	8	5	35 1/2	260	95	249

† Can be supplied with larger lifts.

Clearance Dimensions (in.)

Dimension	Rated Capacity* (tons)								
	1/4	1/2	1	1 1/2 & 2	3 & 4	5	6	8	10
A	12 7/8	12 7/8	14	17 5/16	21 1/2	24 1/4	25	34 1/2	35 1/2
B	3 11/16	3 11/16	3 11/16	4 3/16	3 5/16	4 3/16	4 3/16	4 3/4	4 3/4
C	7 3/16	7 3/16	7 3/16	6 11/16	8 15/16	10 5/16	10 5/16	12 3/4	12 3/4
D	4 1/8	4 1/8	4 1/8	5 1/16	5 1/16	4 7/8	4 7/8	5 13/16	5 13/16
E	3 1/4	3 1/4	3 1/4	4 13/16	4 13/16	5	5	4 1/16	4 1/16
F	2 1/16	2 1/16	2 1/16	3 3/8	3	2 15/16	2 15/16	3 3/4	3 3/4
G	3 7/8	3 7/8	3 3/4	5 3/16	8 1/4	11 13/16	11 13/16	17 3/16	17 3/16
H	1 1/16	1 1/16	1 3/16	1 1/8	1 1/4	1 1/4	1 3/8	1 11/16	1 13/16
I	3 3/4	3 3/4	3 3/4	4 13/16	4 1/4	4 3/16	4 3/16	6 1/16	6 1/16
J	2 5/8	2 5/8	2 15/16	3 5/8	4 1/8	4 1/8	4 5/8	5 5/8	6 1/8
JJ	2 5/8	2 5/8	3 9/16	3 11/16	4 7/8	---	---	---	---
K	1 5/16	1 5/16	1 1/8	1 1/2	1 11/16	1 11/16	1 7/8	2 1/4	2 1/16
L	1 3/4	1 3/4	1 3/4	1 1/4	3 1/2	4 7/8	4 7/8	7 5/16	7 5/16
M	7 1/16	7 1/16	7 1/16	8 5/8	8 5/8	8 5/8	8 5/8	8 5/8	8 5/8
N	---	---	---	---	10 7/8	10 7/8	10 7/8	10 7/8	10 7/8
R	5 7/16	5 7/16	5 7/16	5 7/16	---	---	---	---	---
S	4 11/16	4 11/16	4 11/16	4 11/16	---	---	---	---	---
T	---	---	---	---	3 7/8	4	4	6 3/8	6 3/8
W	---	---	---	---	4 1/2	6 1/4	6 1/4	6 1/16	6 1/16
X	1 1/32	1 1/32	1 1/8	1 5/16	1 3/4	1 5/8	1 3/4	2 1/16	2 5/16
Y	---	---	---	---	5 1/8	5 7/8	5 7/8	5 7/16	5 7/16

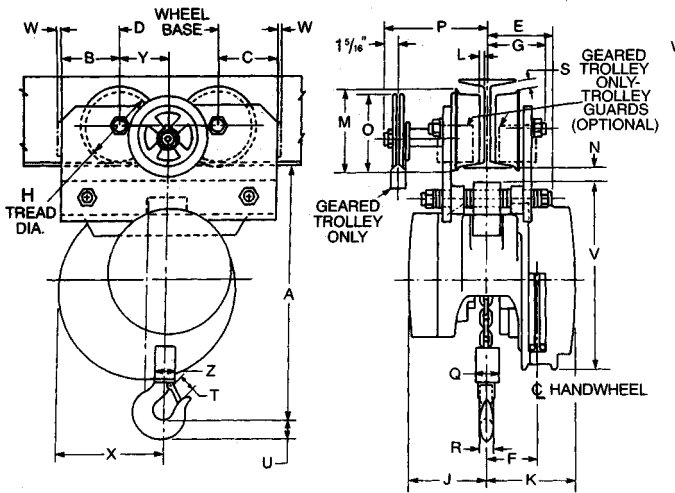
Yale Load King LTP2, LTG2 Army Type Trolley Hoist

Capacity range: 1/4 – 12 ton

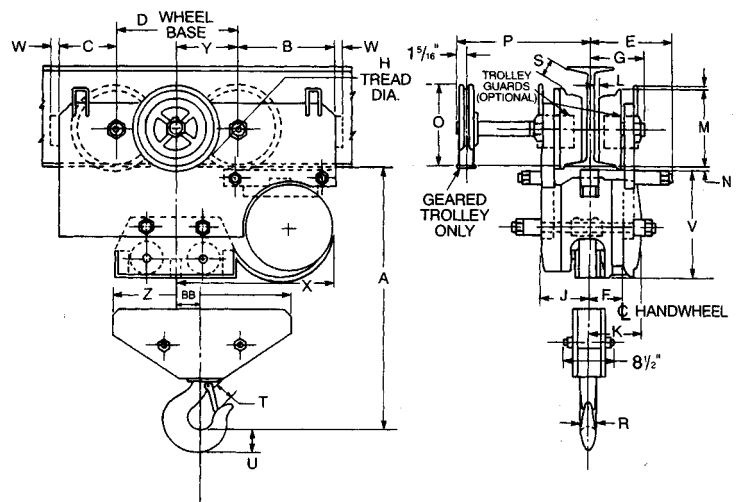


Same quality and performance as the Load King LH2 in a compact, low headroom integral trolley mount. Ideal for applications requiring a moveable hoist including:

- Rugged steel loadbars connected directly to hoist frame
- Reduced headroom., side clearances and end approach for easy maneuvering of heavy loads in tight places
- Standard Load Limiter automatic overload protection
- Plain and geared trolley mounts in capacities from 1/4 to 12 tons
- Universal tread trolley wheels for operation on sloped or flat flanged beams
- Standard hand chain drop 2 feet less than lift (example: 8 foot lift hoist has 6 foot hand chain drop)
- Chain containers, zinc-plated load and hand chain, aluminum unwelded hand chain, Latchlok hooks, bronze hooks, bullard hooks, larger beam trolleys, trolley guards, and units without Load Limiter optional, depending on capacity
- Lifetime warranty
- Metric rated
- Made in U.S.A.



1/4 – 6 Ton



8 – 12 Ton

Specifications

Rated Capacity* (Tons)	Product Code		Standard Lift (ft.)	Reeving	American Standard depth (in.) †	Beam Adjustment Ranges Flange Width (in.) †	Chain Pull to Lift Full Load	Chain Overhauled to Lift Load One Foot (ft.)	Minimum Headroom (in.)	Minimum Radius Curve (in.)	Shipping Weight (lbs.)	
	LTP2 Plain Trolley	LTG2 Geared Trolley									Plain Trolley	Geared Trolley
1/4	925-01400	925-01500	8	1	4-12 **	2 5/8-5 1/2	23	22 1/2	11 3/4	30	66	108
1/2	925-03400	925-03500	8	1	4-12 **	2 5/8-5 1/2	46	22 1/2	11 3/4	30	66	108
1	925-05400	925-05500	8	1	4-12 **	2 5/8-5 1/2	69	30	11 3/4	30	78	130
1 1/2	925-06400	925-06500	8	1	6-15	3 3/8-5 5/8	80	40 1/2	15 5/16	30	136	164
2	925-07400	925-07500	8	1	6-15	3 3/8-5 5/8	83	52	15 5/16	30	136	164
3	925-09400	925-09500	8	2	7-15	3 3/8-5 5/8	85	81	8 7/8	48	182	230
4	925-11400	925-11500	8	2	7-15	3 3/8-5 5/8	87	104	18 7/8	48	182	230
5	925-13400	925-13500	8	3	8-18	4-6 1/4	74	156	23 1/2	60	268	300
6	925-14400	925-14500	8	3	8-18	4-6 1/4	89	156	24	60	273	305
8	925-16400	925-16500	8	4	12-24	5-8	91	208	28 1/4	72	506	589
10	925-17400	925-17500	8	5	12-24	5-8	93	260	28 1/4	72	513	596
12	925-18400	925-18500	8	6	12-24	5 1/2-8	95	312	30 3/8	96	1050	1130

**For 1/4 through 1 ton geared trolleys - minimum beam size S6 x 12.5 (3 3/8 flange width)

† Universal tread trackwheels designed to operate on either sloped or flat flange beams, rails, or tracks

Clearance Dimensions (in.)

Dimension	Rated Capacity* (tons)															
	1/4, 1/2, & 1		1 1/2 & 2		3 & 4		5		6		8		10		12	
	Plain	Geared	Plain	Geared	Plain	Geared	Plain	Geared	Plain	Geared	Plain	Geared	Plain	Geared	Plain	Geared
A	11 3/4	11 13/16	15 5/16	15 5/16	18 7/8	18 7/8	23 1/2	23 1/2	24	24	28 1/4	28 1/4	28 1/4	28 1/4	30 3/8	30 3/8
B	4 3/16	4 3/8	3 11/16	3 11/16	5 3/4	5 3/4	6 1/2	6 1/2	6 1/2	6 1/2	8 15/16	8 15/16	8 15/16	8 15/16	10 7/8	10 7/8
C	2 9/16	2 9/16	3 11/16	3 11/16	3 7/16	3 7/16	3 3/4	3 3/4	3 3/4	3 3/4	5 1/4	5 1/4	5 1/4	5 1/4	7 3/16	7 3/16
D	6	6	6	6	6 7/8	6 7/8	7 3/4	7 3/4	7 3/4	7 3/4	11	11	11	11	11	11
E	4 1/2	4 15/16	5	5	5 7/16	5 7/16	6 1/8	6 1/8	6 1/8	6 1/8	7 1/4	7 1/4	7 1/4	7 1/4	7 1/4	7 1/4
F	2 1/16	2 1/16	3 3/8	3 3/8	3	3	2 11/16	2 11/16	2 11/16	2 11/16	3	3	3	3	3	3
G	3	3 3/4	3 5/8	3 3/4	4 5/16	4 5/16	4 15/16	4 15/16	4 15/16	4 15/16	5 9/16	5 9/16	5 9/16	5 9/16	5 13/16	5 13/16
H	3 1/8	4	4 3/4	4	5	5	6	6	6	6	8	8	8	8	8	8
J	3 3/4	3 3/4	4 13/16	4 13/16	4 13/16	4 13/16	5	5	5	5	4 13/16	4 13/16	4 13/16	4 13/16	4 13/16	4 13/16
K	4 1/8	4 1/8	5 1/16	5 1/16	5 1/16	5 1/16	4 7/8	4 7/8	4 7/8	4 7/8	5 1/16	5 1/16	5 1/16	5 1/16	5 1/16	5 1/16
L	5/16	5/16	1/2	5/16	1/4	1/4	3/8	3/8	3/8	3/8	1/2	1/2	1/2	1/2	1 1/16	1 1/16
M	4	4 3/4	5 5/16	4 3/4	5 7/8	5 7/8	7	7	7	7	9 7/16	9 7/16	9 7/16	9 7/16	9 1/2	9 1/2
N	1/2	9/16	9/16	9/16	1 1/16	1 1/16	1 1/16	1 1/16	1 1/16	1 1/16	1/2	1/2	1/2	1/2	7/16	7/16
O	---	5 9/16	---	5 9/16	6 1/8	6 1/8	6 3/4	6 3/4	6 3/4	6 3/4	7 7/16	7 7/16	7 7/16	7 7/16	7 3/16	7 3/16
P	---	10	---	10	8 15/16	8 15/16	10 7/16	10 7/16	10 7/16	10 7/16	11 7/16	11 7/16	11 7/16	11 7/16	11 11/16	11 11/16
Q	2	2	2 1/2	2 1/2	3 7/8	3 7/8	4	4	4	4	11 15/16	11 15/16	---	---	---	---
R	1 1/16	1 1/16	1 1/8	1 1/8	1 1/4	1 1/4	1 1/4	1 1/4	1 3/8	1 3/8	1 3/16	1 3/16	1 3/16	1 3/16	2 3/8	2 3/8
S	1/16	15/16	3/16	15/16	15/16	15/16	3/4	3/4	3/4	3/4	2 3/16	2 3/16	2 3/16	2 3/16	5 1/16	5 1/16
T	1	1	1 3/8	1 3/8	1 1/8	1 1/8	1 5/8	1 5/8	1 3/4	1 3/4	2 1/16	2 1/16	2 1/16	2 1/16	3	3
U	7/8	7/8	1 1/8	1 1/8	1 11/16	1 11/16	1 11/16	1 11/16	1 7/8	1 7/8	2 9/16	2 9/16	2 9/16	2 9/16	3	3
V	10 1/8	10 1/8	11 3/8	11 3/8	11 3/8	11 3/8	11 3/8	11 3/8	11 3/8	11 3/8	11 5/8	11 5/8	11 5/8	11 5/8	11 5/8	11 5/8
W	1/4	3/8	3/8	3/8	1/2	1/2	5/8	5/8	5/8	5/8	5/8	5/8	5/8	5/8	5/8	5/8
X	7 3/16	7 3/16	6 11/16	6 11/16	8 15/16	8 15/16	10 5/16	10 5/16	10 5/16	10 5/16	14 7/16	14 7/16	14 7/16	14 7/16	16 3/8	16 3/8
Y	3	3	3	3	3 1/16	3 1/16	3 7/8	3 7/8	3 7/8	3 7/8	5 1/2	5 1/2	5 1/2	5 1/2	5 1/2	5 1/2
Z	2	2	2 1/2	2 1/2	4 1/2	4 1/2	6 1/4	6 1/4	6 1/4	6 1/4	13 15/16	13 15/16	18 3/16	18 3/16	21 11/16	21 11/16
AA	---	---	---	---	---	---	---	---	---	---	3/8	3/8	3/8	3/8	3/8	3/8
BB	---	---	---	---	---	---	---	---	---	---	1 15/16	1 15/16	0	0	0	0

Note: Dimensions are based on minimum beam and may vary with larger beams.

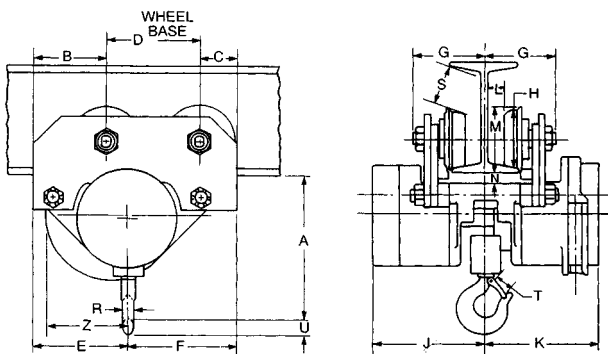
Yale Load King Low Headroom Trolley Hoist

Capacity range: 1/2–6 ton

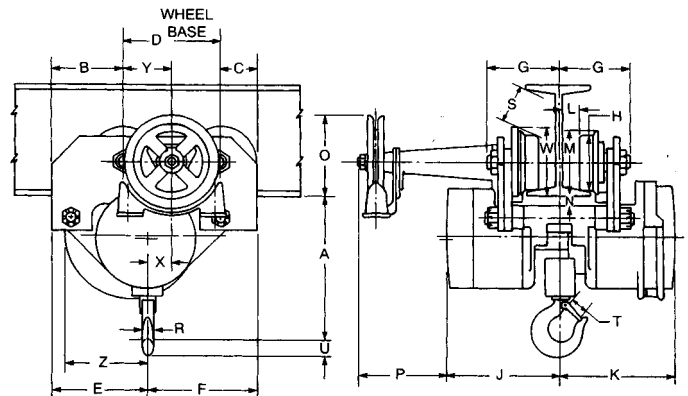


Hoist and trolley all in one unit for low headroom applications features:

- Crowned tread and flanged wheels to minimize rolling friction
- Simple, efficient design
- Reduced headroom, side clearances and end approach for easy maneuvering of loads in tight places
- Plain trolley mounts in capacities from 1/2 to 6 tons
- Geared trolley mounts in capacities from 1 1/2 to 6 tons
- Standard hand chain drop 2 feet less than lift (example: 8 foot lift hoist has 6 foot hand chain drop)
- Chain containers, zinc-plated load and hand chain, aluminum unwelded hand chain, Latchlok hooks, bronze hooks, bullard hooks, larger beam trolleys, trolley guards and units without Load Limiter optional, depending on capacity
- Standard Load Limiter/automatic overload protection
- Lifetime warranty
- Metric rated
- Made in U.S.A.



Plain trolley



Geared trolley

Specifications

Rated Capacity* (Tons)	Product Code		Standard Lift (ft.)	Reeving	American Standard depth (in.) ††	Beam Adjustment Ranges Flange Width (in.) ††	Chain Pull to Lift Full Load Foot (lbs.)	Chain Overhauled to Lift Load One Foot (ft.)	Minimum Headroom (in.)	Minimum Radius Curve (in.)	Shipping Weight (lbs.)	
	Plain Trolley	Geared Trolley									Plain Trolley	Geared Trolley
1/2	926-03400	----	8	1	6-12 **†	3 3/8-5	46	22 1/2	8 7/8	36	88	----
1	926-05400	----	8	1	6-12 **†	3 3/8-5	69	30	9 3/4	36	93	----
1 1/2	926-06400	926-06500	8	1	7-15 **†	3 5/8-5 1/2	80	40 1/2	12 1/2	48	186	210
2	926-07400	926-07500	8	1	7-15 †	3 5/8-5 1/2	83	52	12 1/2	48	186	216
3	926-09400	926-09500	8	2	7-15 †	3 5/8-5 1/2	85	81	14 1/8	48	203	233
4	926-11400	926-11500	8	2	8-24 †	4-7	88	104	16 3/4	96	308	372
5	926-13400	926-13500	8	3	8-24 †	4-7	75	156	18 1/4	96	328	370
6	926-14400	926-14500	8	3	8-24 †	4-7	90	156	18 3/4	96	333	375

** 1/2 and 1 ton also available for 4" and 5" S-beam, and 1 1/2 and 2 ton for 6" S-beam without extra charge

† Universal tread trackwheels designed to operate on either sloped or flat flange beams, rails, or tracks

Also can be used on flat flange beams withing the same range of flange widths, provided beam depth will accommodate wheel diameter (check clearance diagram).

†† Applies to minimum size S-beam within adjustability range

Clearance Dimensions (in.)

Dimension	Rated Capacity* (tons)						
	1/2	1	1 1/2 & 2	3	4	5	6
A	8 7/8	9 1/4	12 1/2	14 1/8	16 3/4	18 1/4	18 3/4
B	3 5/8	3 3/8	6	6	7 3/8	7 3/8	7 3/8
C	3 5/8	3 5/8	3 1/8	3 1/8	4	4	4
D	6 1/2	6 1/2	7 3/4	7 3/4	9	9	9
E	6 7/8	6 3/4	7 5/8	10 1/2	11	11 7/8	11 7/8
F	6 3/4	6 7/8	9 1/4	6 3/8	9 3/8	8 1/2	8 1/2
G	3 3/4	3 3/4	5 7/8	5 7/8	5 7/8	5 7/8	5 7/8
H	4 3/4	4 3/4	4 5/8	4 5/8	5 7/8	5 7/8	5 7/8
J	6	6	9 5/16	9 5/16	10 9/16	10 9/16	10 9/16
K	8 1/8	8 1/8	9 5/8	9 5/8	11	11	11
L	1/2	1/2	1/2	1/2	1/2	1/2	1/2
M	5 7/16	5 7/16	5 3/8	5 3/8	6 3/4	6 3/4	6 3/4
N	1	1	1	1	1 1/8	1 1/8	1 1/8
O	----	----	6 3/4	6 3/4	6 1/2	6 1/2	6 1/2
P	----	----	4 7/8	4 7/8	4 1/4	4 1/4	4 1/4
R	1 1/16	1 3/16	1 1/8	1 1/4	1 1/4	1 1/4	1 3/8
S	5/16	5/16	1 3/8	1 3/8	1 1/16	1 1/16	1 1/16
T	1 1/32	1 1/8	1 5/16	1 5/8	1 5/8	1 5/8	1 3/4
U	1 5/16	1 1/8	1 1/2	1 11/16	1 11/16	1 11/16	1 7/8
W	----	----	5 3/8	5 3/8	7	7	7
X	----	----	2 1/4	5/8	7/8	----	----
Y	----	----	3 7/8	3 7/8	4 1/2	4 1/2	4 1/2
Z	7 3/8	7 1/4	6 5/8	9 1/2	9 1/2	10 3/8	10 3/8

Note: Dimensions G, L, M, O, P, S & W are shown for minimum S-beam and increase proportionally for larger beams. Dimension N is shown for minimum S-beam and decreases proportionally for larger beams.

Yale NH, NRP and NRG hand hoists

Yale NH, NRP, and NRG hand hoists feature steel construction that is ideally suited for special applications where certain chemicals or gases are present that may attack other metals. For these applications the Yale NH hook type hand hoist in 1/2 to 40 ton capacities, or the Yale NRP/NRG trolley type hand hoist in 16, 20, or 24 ton capacities may be the answer.

These hoists feature heavy steel housings that enclose every precision machined working part. Gears and pinions are nickel-chrome-molybdenum alloy steel. The center planetary gear train system features modified involute stub tooth form, with heat treated alloy steel gear teeth. Gears are mounted on heavy duty roller bearings for smooth

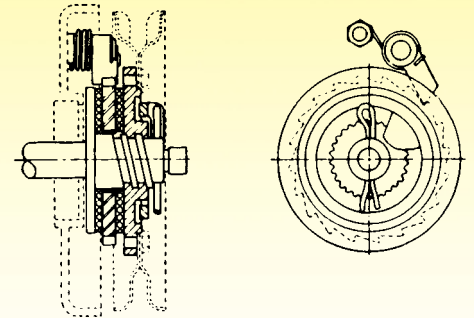
operation. Yale NH/NRP/NRG hoists feature ductile iron chain strippers, heat treated, cast-steel load wheels and heavy gauge, stamped steel covers. The load chain guides and hand chain guides are designed to prevent chain fouling and the hoists are lifetime lubricated for low maintenance.

Yale NRP (plain) and NRG (geared) hand hoists feature through-hardened, machined tread, trolley wheels mounted on precision bearings.

The low headroom design makes it ideal for those applications with low ceilings and limited headroom. It may save money by allowing lower ceilings in new construction.

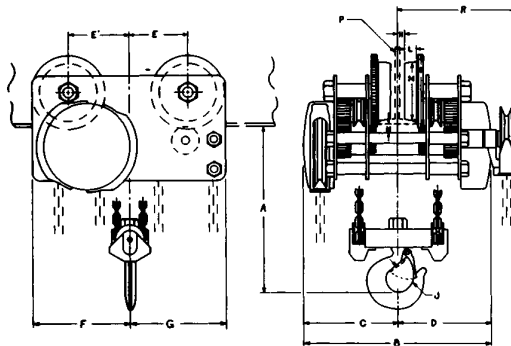
The positive acting, Weston type load brake will operate efficiently regardless of any lubrication on its surfaces and despite hot, cold, wet or dusty conditions.

If your application calls for a hand hoist constructed largely of steel, Yale NH/NRP/NRG hoists may be the ideal solution.



Yale NRP (plain) and NRG (geared) close headroom trolley type hand hoists

Yale NRP and NRG hoists are not adjustable for different size beams. Each unit is custom built to fit the size beam specified on the order. Beam size, height, and flange width are required for all orders. Yale NRP and NRG hand hoists are recommended for straight track operations only.

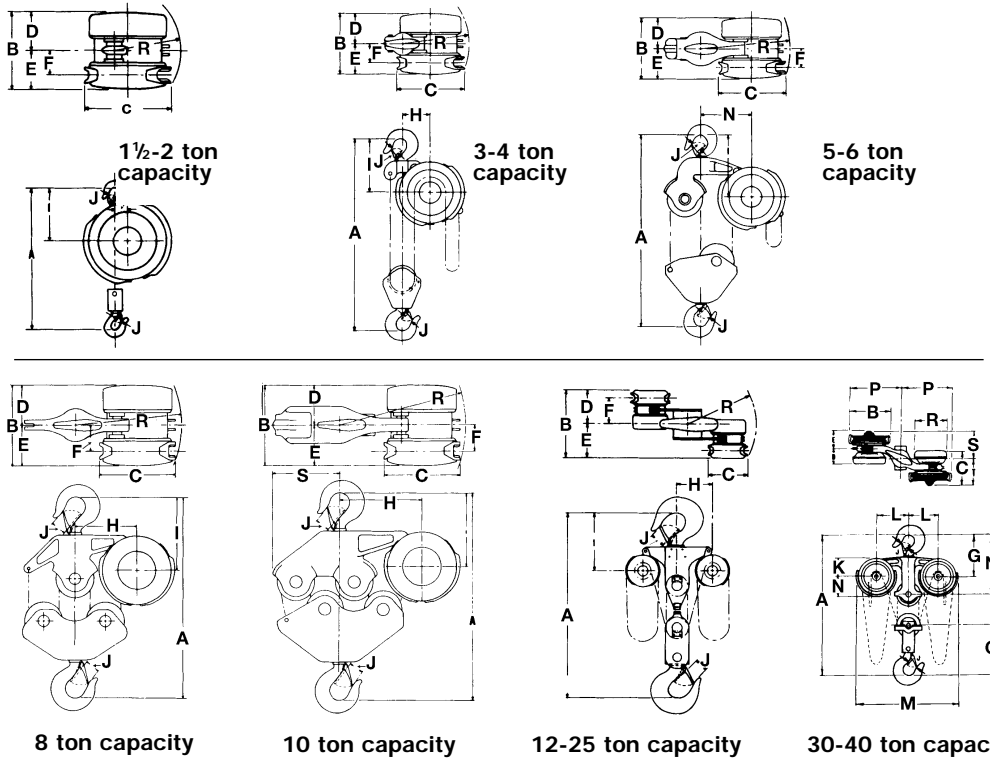


Cap. Tons	Product Code Number (Plain)	Product Code Number (Geared)	*Load Chain Length 2 Chains per Hoist	Min Head-room	Chain Pull to Lift Rated Load (Lbs.)	Chain Overhauled to Lift Load One Foot in Feet	Net Weight Lbs.	
							Plain	Geared
16	828-19400	828-19500	38'6"	13½"	68	710	1600	1681
20	828-20400	828-20500	39'0"	17¼"	87	731.5	1950	2110
24	828-21400	828-21500	39'0"	17¼"	104	731.5	1950	2110

NRP (Plain Trolley) & NRG (Geared Trolley) DIMENSIONS IN INCHES

Cap. Tons	A	B	C	D	E	F	G	H	J	L	M	N	Minimum I-beam P	R	S
16	13½	30¾	15¾	15¾	11¾	18¾	18¾	¾	3	2	11¾	1	15 @ 42.9#	18¾	13½
20	17¼	30¾	15¾	15¾	12¾	19¼	19¼	¾	4¾	2	11¾	1	18 @ 54.7#	18¾	13½
24	17¼	30¾	15¾	15¾	12¾	19¼	19¼	¾	4¾	2	11¾	1	18 @ 54.7#	18¾	13½

Yale NH hook type hand hoists

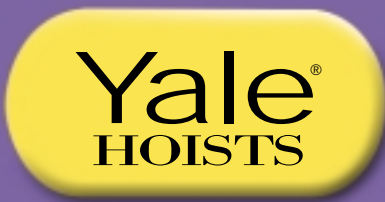


Product Code Number	Rated Capacity in Tons	Minimum Distance Between Hooks, in Inches	Chain Pull to Lift Full Load, in Pounds	Chain Overhauled to Lift Load One Foot, in Feet	Strands of Chain		*Length in Lineal Feet Standard Chain		Weight in Pounds	
					Load	Hand	Load	Hand	Net	Gross
826-03100	1/2	12 3/8	35	33	1	2	9	14'	44	46
826-05100	1	12 3/4	70	33	1	2	9	14'	46	48
826-06100	1 1/2	16 5/8	64	58	1	2	9'4"	14'	85	88
826-07100	2	16 5/8	83	58	1	2	10'4"	16'	85	88
826-09100	3	23 1/2	66	116	2	2	22'6"	18'	122	140
826-11100	4	24 1/2	86	116	2	2	22'6"	18'	130	144
826-13100	5	25 1/2	71	174	3	2	39'6"	22'	184	208
826-14100	6	25 1/2	88	174	3	2	39'6"	22'	184	208
826-16100	8	26 3/4	91	232	4	2	52'0"	22'	245	283
826-17100	10	30 3/4	94	290	5	2	65'0"	26'	310	355
826-18100	12	49 3/4	*88 (2)	*174	6	4	91'0"	26' (2)	660	720
826-19100	16	53 3/4	*91 (2)	*232	8	4	116'0"	26' (2)	825	900
826-20100	20	57 7/8	*95 (2)	*290	10	4	141'0"	26' (2)	1050	1130
826-22100	25	57 7/8	*103 (2)	*348	12	4	169'0"	26' (2)	1070	1160
826-23100	30	63	*107 (2)	*383	10	4	76'6"	20'6" (2)	2530	2700
826-24100	40	77	*122 (2)	*460	12	4	94'6"	21'6" (2)	3110	3450

*Standard lift is 8 feet.

NH DIMENSIONS IN INCHES

Cap. Tons	A	B	C	D	E	F	G	H	I	J	K	L	M	N	O	P	R	S	T
1/2	12 3/8	8 1/2	8 1/2	4 1/4	4 1/4	3	-	1 3/8	5 7/8	1	-	-	-	-	-	-	7	-	-
1	12 3/4	8 1/2	8 1/2	4 1/4	4 1/4	3	-	1 3/8	5 7/8	1	-	-	-	-	-	-	7	-	-
1 1/2	15 3/4	10	11	5	5	3 1/4	-	1 3/4	8 1/8	1 1/8	-	-	-	-	-	-	8 1/2	-	-
2	15 3/4	10	11	5	5	3 1/4	-	1 3/4	8 1/8	1 1/8	-	-	-	-	-	-	8 1/2	-	-
3	23 1/2	10	11	5	5	3 1/4	-	4 7/8	9 1/8	1 1 1/32	-	-	-	-	-	-	11 1/2	-	-
4	24 1/2	10	11	5	5	3 1/4	-	4 7/8	9 5/8	1 1 1/16	-	-	-	-	-	-	11 1/2	-	-
5	25 1/2	10	11	5	5	3 1/4	-	6 3/8	11 1/2	1 1 1/16	-	-	-	-	-	-	13 1/2	-	-
6	25 1/2	10	11	5	5	3 1/4	-	6 3/8	11 1/2	1 1 1/16	-	-	-	-	-	-	13 1/2	-	-
8	26 3/4	10	11	5	5	3 1/4	-	8 1/2	11	2 1/16	-	-	-	-	-	-	14	-	-
10	30 3/4	10	11	5	5	3 1/4	-	10 1/4	10 5/8	2 1/4	-	-	-	-	-	-	17	-	-
12	49 3/4	16	11	8	8	6 1/4	-	11 3/4	16	3	-	-	-	-	-	-	19 1/2	-	-
16	53 3/4	17 1/2	11	8 3/4	8 3/4	7	-	11 3/4	17 1/2	3 5/8	-	-	-	-	-	-	19 7/8	-	-
20	57 7/8	19 1/2	11	9 3/4	9 3/4	8	-	11 3/4	18	3 5/8	-	-	-	-	-	-	20 3/8	-	-
25	57 7/8	21 1/4	11	10 5/8	10 5/8	8 5/8	-	11 3/4	18	3 5/8	-	-	-	-	-	-	20 7/8	-	-
30	63	17 7/8	15	7 3/4	7 3/4	-	22	8 1/4	10 13/16	4 3/16	7 1/4	16 3/4	50 5/8	26	25 1/16	26 3/16	13 1/16	13	13
40	77	17 7/8	15	7 3/4	7 1/4	-	24 3/8	8 1/4	10 5/8	5 1/8	7 1/4	16 3/4	50 5/8	32 1/8	25 5/16	33 1/2	13 1/16	13	13



For additional information contact your Yale representative or Yale headquarters direct.

414 West Broadway Ave. • P.O. Box 769 • Muskegon, MI 49443
PH: 800-999-6318 • FX: 800-766-0223

⚠ WARNING

- To Avoid Injury:
- Do not exceed working load limit, load rating, or capacity.
 - Do not use to lift people or loads over people.
 - Read and follow all instructions.

PRINTED IN U.S.A. / COPYRIGHT 2000, YALE® HOISTS, DIVISION OF COLUMBUS MCKINNON CORPORATION / BULLETIN NO Y/L-1008-0502

